

A bright future

Friends of the Earth's electricity sector model
for 2030

Data

Contents

The scenarios

Good gas
Slow gas
Good mix
Slow mix
Good coal
Slow coal

Figures

Energy mix
Gas consumption
Carbon dioxide emissions

This data accompanies the report

A bright future: Friends of the Earth's electricity sector model for 2030,
(March 2006), available at

http://www.foe.co.uk/resource/reports/bright_future_data.pdf



**Friends of
the Earth**

Friends of the Earth

26-28 Underwood Street
London N17JQ

Tel: 020 7490 1555 Fax: 020 7490 0881

Email: info@foe.co.uk

Website: www.foe.co.uk

Friends of the Earth Trust company number 1533942, registered charity number 281681

"Good Gas" scenario																										
Electricity Supply (TWh)	2005	2006	2007	2008	2009	2010	2011	2012	2013	2014	2015	2016	2017	2018	2019	2020	2021	2022	2023	2024	2025	2026	2027	2028	2029	2030
Demand	402	404	406	408	409	410	405	400	395	390	385	380	375	370	365	359	359	359	359	359	359	359	359	359	359	359
CHP	25	27	29	32	35	39	43	47	52	58	64	71	78	85	91	97	97	97	97	97	97	97	94	87	79	72
Micro CHP							2	4	6	8	10	12	14	16	18	20	22	24	26	28	30	32	34	36	38	40
Renewables	14	18	21	25	29	33	38	43	49	55	62	69	76	84	92	100	106	112	118	124	130	136	142	148	154	160
Nuclear	80	86	80	77	68	61	53	53	53	53	53	44	44	44	27	27	27	27	8	8	8	8	8	8	8	8
Interconnectors	10		3	2	5	2									5	4	3		7							
Oil	4	4	4	3	3	3	2	2																		
IGCC & Miller CCS schemes							7	7	7	7	7	7	7	7	7	7	7	7	7	7	7	7	7	7	7	7
CCGT current	138	138	138	138	138	138	129	119	108	103	83	83	63	54	50	29	20	14	13	11	2					
Coal current	107	107	107	107	107	107	101	95	90	76	67	35	21	2												
Drax	24	24	24	24	24	24	24	24	24	24	24	24	17	8												
Drax (retrofit & 20% biomass)																										
Coal retrofit/new																										
CCGT advanced/refurbished						3	6	6	6	6	15	35	55	70	75	75	75	75	75	74	75	72	69	69	68	68
Solar CSP imports																	2	3	8	10	10	10	12	12	12	12
Carbon dioxide emissions (MtCO₂)																										
Total emissions (MtCO ₂)	185.6	186.1	186.6	187.3	188.1	190.2	183.4	175.2	167.7	154.5	143.1	122.6	104.5	82.5	75.5	68.9	65.7	63.7	63.8	63.1	60.3	58.1	55.8	54.3	52.7	53.2
Total emissions (MtC)	50.6	50.7	50.9	51.1	51.3	51.9	50.0	47.8	45.7	42.1	39.0	33.4	28.5	22.5	20.6	18.8	17.9	17.4	17.4	17.2	16.5	15.9	15.2	14.8	14.4	14.5
Total emissions as % of 1990 level	79%	79%	79%	79%	80%	81%	78%	74%	71%	66%	61%	52%	44%	35%	32%	29%	28%	27%	27%	27%	26%	25%	24%	23%	22%	23%
CHP	6.3	6.8	7.3	8.0	8.8	9.8	10.8	11.8	13.0	14.5	16.0	17.8	19.5	21.3	22.8	24.3	24.3	24.3	24.3	24.3	24.3	23.5	21.8	19.8	18.0	18.0
Micro CHP	0.0	0.0	0.0	0.0	0.0	0.0	0.5	1.0	1.5	2.0	2.5	3.0	3.5	4.0	4.5	5.0	5.5	6.0	6.5	7.0	7.5	8.0	8.5	9.0	9.5	10.0
CCGT current	56.6	56.6	56.6	56.6	56.6	56.6	52.9	48.8	44.3	42.2	34.0	34.0	25.8	22.1	20.5	11.9	8.2	5.7	5.3	4.5	0.8	0.0	0.0	0.0	0.0	0.0
Coal current	100.9	100.9	100.9	100.9	100.9	100.9	95.2	89.6	84.9	71.7	63.2	33.0	19.8	1.9	0.0	0.0	0.0	0.0	0.0	0.0	0.0	0.0	0.0	0.0	0.0	0.0
Drax	21.8	21.8	21.8	21.8	21.8	21.8	21.8	21.8	21.8	21.8	21.8	21.8	15.5	7.3	0.0	0.0	0.0	0.0	0.0	0.0	0.0	0.0	0.0	0.0	0.0	0.0
Drax (retrofit & 20% biomass)	0.0	0.0	0.0	0.0	0.0	0.0	0.0	0.0	0.0	0.0	0.0	0.0	0.0	0.0	0.0	0.0	0.0	0.0	0.0	0.0	0.0	0.0	0.0	0.0	0.0	0.0
Coal retrofit/new	0.0	0.0	0.0	0.0	0.0	0.0	0.0	0.0	0.0	0.0	0.0	0.0	0.0	0.0	0.0	0.0	0.0	0.0	0.0	0.0	0.0	0.0	0.0	0.0	0.0	0.0
CCGT advanced/refurbished	0.0	0.0	0.0	0.0	0.0	1.1	2.2	2.2	2.2	2.2	5.6	13.0	20.4	25.9	27.8	27.8	27.8	27.8	27.8	27.4	27.8	26.6	25.5	25.5	25.2	25.2
Total gas consumption (BCM methane)	32.0	32.3	32.6	32.9	33.3	34.4	33.8	32.5	31.1	31.1	29.6	34.5	35.3	37.4	38.5	35.1	33.5	32.5	32.6	32.2	30.8	29.7	28.4	27.7	26.9	27.1
Gas consumption as % of 2005	100%	101%	102%	103%	104%	107%	106%	101%	97%	97%	92%	108%	110%	117%	120%	110%	105%	101%	102%	100%	96%	93%	89%	86%	84%	85%

"Slow Gas" scenario																											
Electricity Supply (TWh)																											
	2005	2006	2007	2008	2009	2010	2011	2012	2013	2014	2015	2016	2017	2018	2019	2020	2021	2022	2023	2024	2025	2026	2027	2028	2029	2030	
Demand	402	404	406	408	410	411	412	412	411	410	409	408	407	405	403	400	400	400	400	400	400	400	400	400	400	400	400
CHP	25	27	29	32	35	38	41	44	47	51	55	60	65	71	76	80	80	80	80	80	80	80	80	80	80	80	80
Micro CHP							1	2	3	4	5	6	7	8	9	10	11	12	13	14	15	16	17	18	19	20	
Renewables	14	18	21	25	29	33	38	43	48	53	58	63	68	73	77	80	85	90	95	100	105	110	115	120	125	130	
Nuclear	80	86	80	77	68	61	53	53	53	53	53	44	44	44	27	27	27	27	8	8	8	8	8	8	8	8	
Interconnectors	10		3	4	8	6		4	1										5	5	5						
Oil	4	4	4	3	3	3	3	3	2	2																	
IGCC & Miller CCS schemes							7	7	7	7	7	7	7	7	7	7	7	7	7	7	7	7	7	7	7	7	
CCGT current	138	138	138	136	136	136	124	118	106	90	82	82	70	51	50	33	15	9	12	6							
Coal current	107	107	107	107	107	107	106	90	80	70	50	25	15	6													
Drax	24	24	24	24	24	24	24	24	24	24	24	24	12	6													
Drax (retrofit & 20% biomass)																											
Coal retrofit/new																											
CCGT advanced/refurbished						3	15	24	40	56	75	97	119	139	157	163	175	175	180	180	180	179	173	167	161	163	
Solar CSP imports																											
Carbon dioxide emissions (MtCO₂)																											
Total emissions (MtCO ₂)	185.6	186.1	186.6	186.5	187.3	189.1	188.7	175.5	168.0	159.2	145.4	131.4	115.8	103.2	99.8	96.3	93.7	91.4	94.8	92.6	90.4	90.2	88.3	86.3	84.3	85.3	
Total emissions (MtC)	50.6	50.7	50.9	50.9	51.1	51.6	51.5	47.9	45.8	43.4	39.6	35.8	31.6	28.1	27.2	26.3	25.5	24.9	25.8	25.2	24.6	24.6	24.1	23.5	23.0	23.3	
Total emissions as % of 1990 level	79%	79%	79%	79%	79%	80%	80%	74%	71%	68%	62%	56%	49%	44%	42%	41%	40%	39%	40%	39%	38%	38%	37%	37%	36%	36%	
CHP	6.3	6.8	7.3	8.0	8.8	9.5	10.3	11.0	11.8	12.8	13.8	15.0	16.3	17.8	19.0	20.0	20.0	20.0	20.0	20.0	20.0	20.0	20.0	20.0	20.0	20.0	
Micro CHP	0.0	0.0	0.0	0.0	0.0	0.0	0.3	0.5	0.8	1.0	1.3	1.5	1.8	2.0	2.3	2.5	2.8	3.0	3.3	3.5	3.8	4.0	4.3	4.5	4.8	5.0	
CCGT current	56.6	56.6	56.6	55.8	55.8	55.8	50.8	48.4	43.5	36.9	33.6	33.6	28.7	20.9	20.5	13.5	6.2	3.7	4.9	2.5	0.0	0.0	0.0	0.0	0.0	0.0	
Coal current	100.9	100.9	100.9	100.9	100.9	100.9	100.0	84.9	75.4	66.0	47.2	23.6	14.1	5.7	0.0	0.0	0.0	0.0	0.0	0.0	0.0	0.0	0.0	0.0	0.0	0.0	
Drax	21.8	21.8	21.8	21.8	21.8	21.8	21.8	21.8	21.8	21.8	21.8	21.8	10.9	5.5	0.0	0.0	0.0	0.0	0.0	0.0	0.0	0.0	0.0	0.0	0.0	0.0	
Drax (retrofit & 20% biomass)	0.0	0.0	0.0	0.0	0.0	0.0	0.0	0.0	0.0	0.0	0.0	0.0	0.0	0.0	0.0	0.0	0.0	0.0	0.0	0.0	0.0	0.0	0.0	0.0	0.0	0.0	
Coal retrofit/new	0.0	0.0	0.0	0.0	0.0	0.0	0.0	0.0	0.0	0.0	0.0	0.0	0.0	0.0	0.0	0.0	0.0	0.0	0.0	0.0	0.0	0.0	0.0	0.0	0.0	0.0	
CCGT advanced/refurbished	0.0	0.0	0.0	0.0	0.0	1.1	5.6	8.9	14.8	20.7	27.8	35.9	44.0	51.4	58.1	60.3	64.8	64.8	66.6	66.6	66.6	66.2	64.0	61.8	59.6	60.3	
Total gas consumption (BCM methane)	32.0	32.3	32.6	32.5	32.9	33.8	34.1	35.1	36.1	36.4	38.9	43.9	46.3	47.0	50.9	49.1	47.8	46.6	48.3	47.2	46.1	46.0	45.0	44.0	43.0	43.5	
Gas consumption as % of 2005	100%	101%	102%	101%	103%	106%	106%	109%	113%	114%	122%	137%	144%	147%	159%	153%	149%	146%	151%	147%	144%	144%	140%	137%	134%	136%	

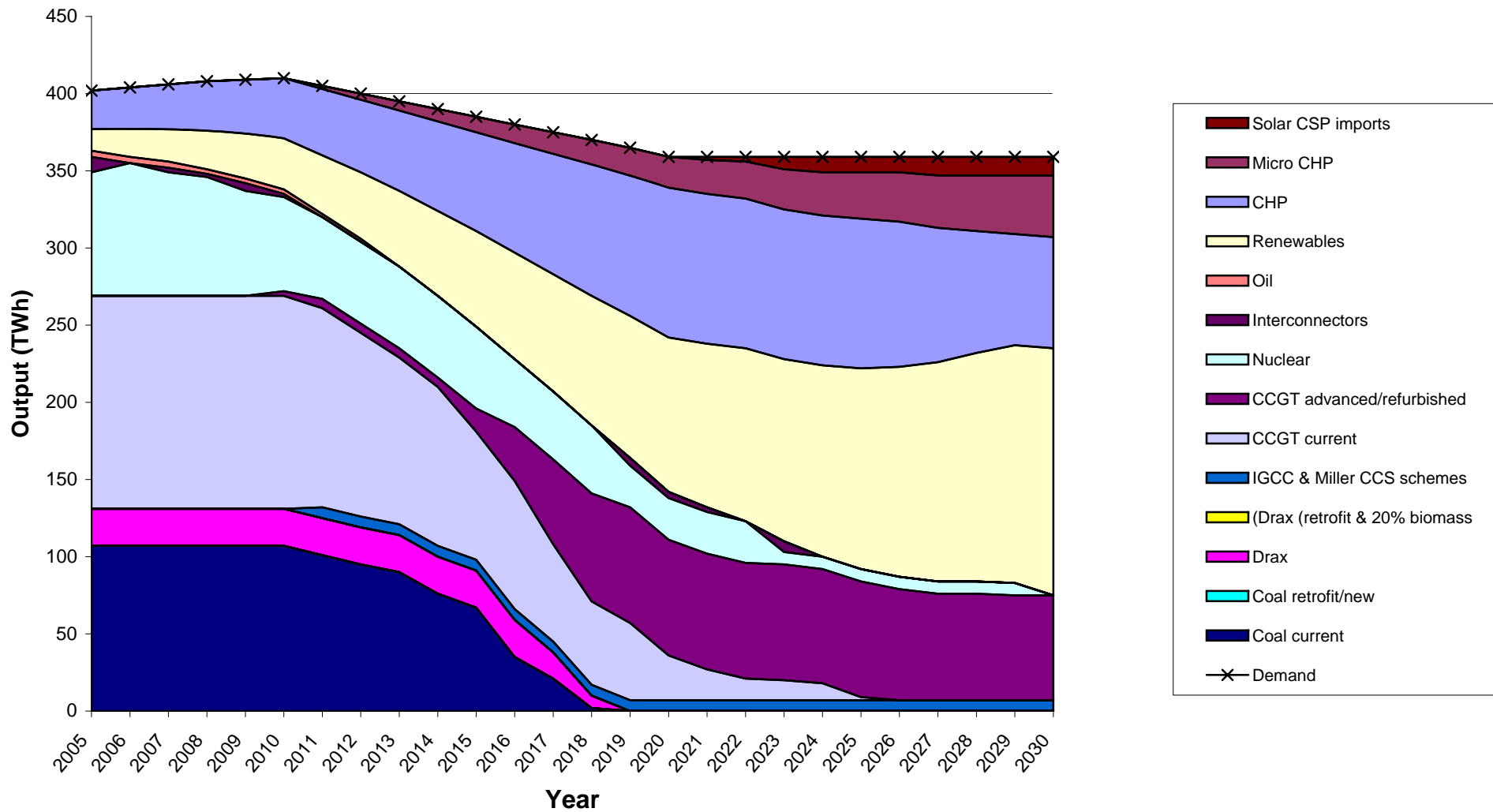
"Good Mix" scenario																											
Electricity Supply (TWh)	2005	2006	2007	2008	2009	2010	2011	2012	2013	2014	2015	2016	2017	2018	2019	2020	2021	2022	2023	2024	2025	2026	2027	2028	2029	2030	
Demand	402	404	406	408	409	410	405	400	395	390	385	380	375	370	365	359	359	359	359	359	359	359	359	359	359	359	359
CHP	25	27	29	32	35	39	43	47	52	58	64	71	78	85	91	97	97	97	97	97	97	95	86	78	71	71	
Micro CHP							2	4	6	8	10	12	14	16	18	20	22	24	26	28	30	32	34	36	38	40	
Renewables	14	18	21	25	29	33	38	43	49	55	62	69	76	84	92	100	106	112	118	124	130	136	142	148	154	160	
Nuclear	80	86	80	77	68	61	53	53	53	53	53	44	44	44	27	27	27	27	8	8	8	8	8	8	8	8	
Interconnectors	10		1		3														3								
Oil	4	4	4	3	3	3	2	2																			
IGCC & Miller CCS schemes							7	7	7	7	7	7	7	7	7	7	7	7	7	7	7	7	7	7	7	7	
CCGT current	138	138	140	140	140	140	126	119	112	100	92	87	67	57	53	31	21	17	15	9	1						
Coal current	107	107	107	107	107	107	101	92	85	70	48	20	12														
Drax	24	24	24	24	24	24	24	24	16	8																	
Drax (retrofit & 20% biomass)									10	22	31	33	33	33	33	33	33	31	33	32	33	31	31	31	30	30	
Coal retrofit/new							3	3	9	9	9	9	9	9	9	9	9	9	9	9	9	9	9	9	9	9	
CCGT advanced/refurbished						3	6	6	6	12	18	30	35	35	35	35	35	32	35	35	34	31	30	30	30	30	
Solar CSP imports																	2	3	8	10	10	10	12	12	12	12	
Carbon dioxide emissions (MtCO₂)																											
Total emissions (MtCO ₂)	185.6	186.1	187.4	188.1	188.9	191.0	184.0	174.1	162.7	145.6	124.5	107.2	96.6	83.4	83.8	76.8	73.2	69.9	71.7	69.2	66.6	64.1	62.0	60.5	58.7	59.2	
Total emissions (MtC)	50.6	50.7	51.1	51.3	51.5	52.1	50.2	47.5	44.4	39.7	34.0	29.2	26.3	22.8	22.9	20.9	20.0	19.1	19.6	18.9	18.2	17.5	16.9	16.5	16.0	16.1	
Total emissions as % of 1990 level	79%	79%	79%	80%	80%	81%	78%	74%	69%	62%	53%	45%	41%	35%	36%	33%	31%	30%	30%	29%	28%	27%	26%	26%	25%	25%	
CHP	6.3	6.8	7.3	8.0	8.8	9.8	10.8	11.8	13.0	14.5	16.0	17.8	19.5	21.3	22.8	24.3	24.3	24.3	24.3	24.3	24.3	23.8	21.5	19.5	17.8	17.8	
Micro CHP	0.0	0.0	0.0	0.0	0.0	0.0	0.5	1.0	1.5	2.0	2.5	3.0	3.5	4.0	4.5	5.0	5.5	6.0	6.5	7.0	7.5	8.0	8.5	9.0	9.5	10.0	
CCGT current	56.6	56.6	57.4	57.4	57.4	57.4	51.7	48.8	45.9	41.0	37.7	35.7	27.5	23.4	21.7	12.7	8.6	7.0	6.2	3.7	0.4	0.0	0.0	0.0	0.0	0.0	
Coal current	100.9	100.9	100.9	100.9	100.9	100.9	95.2	86.8	80.2	66.0	45.3	18.9	11.3	0.0	0.0	0.0	0.0	0.0	0.0	0.0	0.0	0.0	0.0	0.0	0.0	0.0	
Drax	21.8	21.8	21.8	21.8	21.8	21.8	21.8	21.8	14.6	7.3	0.0	0.0	0.0	0.0	0.0	0.0	0.0	0.0	0.0	0.0	0.0	0.0	0.0	0.0	0.0	0.0	
Drax (retrofit & 20% biomass)	0.0	0.0	0.0	0.0	0.0	0.0	0.0	0.0	0.0	5.0	11.0	15.5	16.5	16.5	16.5	16.5	16.5	15.5	16.5	16.0	16.5	15.5	15.5	15.5	15.0	15.0	
Coal retrofit/new	0.0	0.0	0.0	0.0	0.0	0.0	1.8	1.8	5.4	5.4	5.4	5.4	5.4	5.4	5.4	5.4	5.4	5.4	5.4	5.4	5.4	5.4	5.4	5.4	5.4	5.4	
CCGT advanced/refurbished	0.0	0.0	0.0	0.0	0.0	1.1	2.2	2.2	2.2	4.4	6.7	11.1	13.0	13.0	13.0	13.0	13.0	11.8	13.0	13.0	12.6	11.5	11.1	11.1	11.1	11.1	
Total gas consumption (BCM methane)	32.0	32.3	33.0	33.4	33.7	34.8	33.2	32.5	31.9	32.1	33.2	36.1	34.1	33.2	33.4	29.8	27.9	26.7	27.2	26.1	24.6	23.7	22.6	21.9	21.2	21.4	
Gas consumption as % of 2005	100%	101%	103%	104%	105%	109%	104%	101%	100%	100%	104%	113%	106%	104%	104%	93%	87%	83%	85%	82%	77%	74%	71%	68%	66%	67%	

"Slow Mix" scenario																											
Electricity Supply (TWh)	2005	2006	2007	2008	2009	2010	2011	2012	2013	2014	2015	2016	2017	2018	2019	2020	2021	2022	2023	2024	2025	2026	2027	2028	2029	2030	
Demand	402	404	406	408	410	411	412	412	411	410	409	408	407	405	403	400	400	400	400	400	400	400	400	400	400	400	400
CHP	25	27	29	32	35	38	41	44	47	51	55	60	65	71	76	80	80	80	80	80	80	80	80	79	73	75	
Micro CHP							1	2	3	4	5	6	7	8	9	10	11	12	13	14	15	16	17	18	19	20	
Renewables	14	18	21	25	29	33	38	43	48	53	58	63	68	73	77	80	85	90	95	100	105	110	115	120	125	130	
Nuclear	80	86	80	77	68	61	53	53	53	53	53	44	44	44	27	27	27	27	8	8	8	8	8	8	8	8	
Interconnectors	10	0	3	1	9	8			2						6				8	9	8	2					
Oil	4	4	4	4	4	4	3	3	2	2																	
IGCC & Miller CCS schemes							7	7	7	7	7	7	7	7	7	7	7	7	7	7	7	7	7	7	7	7	
CCGT current	138	138	138	138	140	140	137	134	135	132	85	80	60	50	40	25	19	13	12	5							
Coal current	107	107	107	107	100	94	88	82	78	70	62	24	15	6													
Drax	24	24	24	24	25	24	24	24	16	8																	
Drax (retrofit & 20% biomass)										10	22	31	33	33	33	33	33	33	33	33	33	33	33	30	30	30	
Coal retrofit/new						6	14	14	14	14	14	26	20	25	40	50	50	50	52	52	52	52	52	50	50	50	
CCGT advanced/refurbished						3	6	6	6	6	48	67	88	88	88	88	88	88	92	92	92	92	88	88	88	88	
Solar CSP imports																											
Carbon dioxide emissions (MtCO₂)																											
Total emissions (MtCO ₂)	185.6	186.1	186.6	187.3	183.2	183.0	182.0	176.2	166.5	156.7	145.4	127.7	117.7	109.8	110.5	111.6	109.4	107.1	109.7	107.0	105.2	105.5	104.3	101.6	100.3	101.1	
Total emissions (MtC)	50.6	50.7	50.9	51.1	50.0	49.9	49.6	48.0	45.4	42.7	39.7	34.8	32.1	30.0	30.1	30.4	29.8	29.2	29.9	29.2	28.7	28.8	28.4	27.7	27.4	27.6	
Total emissions as % of 1990 level	79%	79%	79%	79%	78%	78%	77%	75%	71%	66%	62%	54%	50%	47%	47%	47%	46%	45%	47%	45%	45%	45%	44%	43%	43%	43%	
CHP	6.3	6.8	7.3	8.0	8.8	9.5	10.3	11.0	11.8	12.8	13.8	15.0	16.3	17.8	19.0	20.0	20.0	20.0	20.0	20.0	20.0	20.0	20.0	19.8	18.3	18.8	
Micro CHP	0.0	0.0	0.0	0.0	0.0	0.0	0.3	0.5	0.8	1.0	1.3	1.5	1.8	2.0	2.3	2.5	2.8	3.0	3.3	3.5	3.8	4.0	4.3	4.5	4.8	5.0	
CCGT current	56.6	56.6	56.6	56.6	57.4	57.4	56.2	54.9	55.4	54.1	34.9	32.8	24.6	20.5	16.4	10.3	7.8	5.3	4.9	2.1	0.0	0.0	0.0	0.0	0.0	0.0	
Coal current	100.9	100.9	100.9	100.9	94.3	88.6	83.0	77.3	73.6	66.0	58.5	22.6	14.1	5.7	0.0	0.0	0.0	0.0	0.0	0.0	0.0	0.0	0.0	0.0	0.0	0.0	
Drax	21.8	21.8	21.8	21.8	22.8	21.8	21.8	21.8	14.6	7.3	0.0	0.0	0.0	0.0	0.0	0.0	0.0	0.0	0.0	0.0	0.0	0.0	0.0	0.0	0.0	0.0	
Drax (retrofit & 20% biomass)	0.0	0.0	0.0	0.0	0.0	0.0	0.0	0.0	0.0	5.0	11.0	15.5	16.5	16.5	16.5	16.5	16.5	16.5	16.5	16.5	16.5	16.5	16.5	15.0	15.0	15.0	
Coal retrofit/new	0.0	0.0	0.0	0.0	0.0	4.5	8.3	8.3	8.3	8.3	8.3	15.5	11.9	14.9	23.8	29.8	29.8	29.8	30.9	30.9	30.9	30.9	30.9	29.8	29.8	29.8	
CCGT advanced/refurbished	0.0	0.0	0.0	0.0	0.0	1.1	2.2	2.2	2.2	2.2	17.8	24.8	32.6	32.6	32.6	32.6	32.6	32.6	34.0	34.0	34.0	34.0	32.6	32.6	32.6	32.6	
Total gas consumption (BCM methane)	32.0	32.3	32.6	32.9	33.7	34.7	35.1	35.0	35.7	36.3	35.7	39.4	40.1	38.9	37.6	35.1	33.9	32.8	33.5	32.2	31.2	31.4	30.7	30.6	29.9	30.3	
Gas consumption as % of 2005	100%	101%	102%	103%	105%	108%	110%	109%	112%	113%	111%	123%	125%	121%	117%	109%	106%	102%	105%	100%	97%	98%	96%	95%	93%	95%	

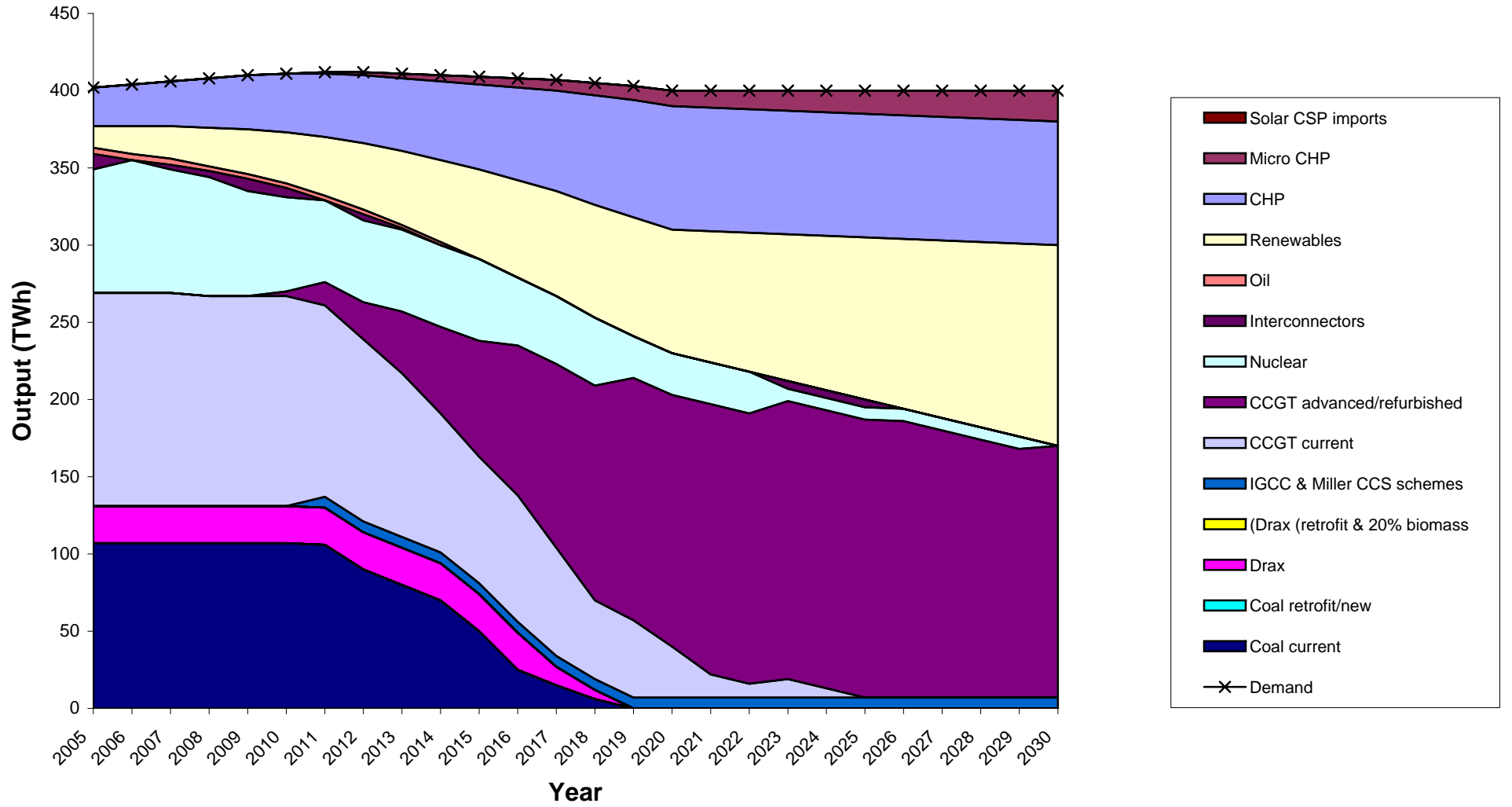
"Good Coal" scenario																											
Electricity supply (TWh)	2005	2006	2007	2008	2009	2010	2011	2012	2013	2014	2015	2016	2017	2018	2019	2020	2021	2022	2023	2024	2025	2026	2027	2028	2029	2030	
Demand	402	404	406	408	409	410	405	400	395	390	385	380	375	370	365	359	359	359	359	359	359	359	359	359	359	359	
CHP	25	27	29	32	35	39	43	47	52	58	64	71	78	85	91	97	97	97	97	97	97	97	97	90	82	78	81
Micro CHP							2	4	6	8	10	12	14	16	18	20	22	24	26	28	30	32	34	36	38	40	
Renewables	14	18	21	25	29	33	38	43	49	55	62	69	76	84	92	100	106	112	118	124	130	136	142	148	154	160	
Nuclear	80	86	80	77	68	61	53	53	53	53	53	44	44	44	27	27	27	27	8	8	8	8	8	8	8	8	
Interconnectors	10		1		3							1	1			1			3	2							
Oil	4	4	4	3	3	3	2	2																			
IGCC & Miller CCS schemes							7	7	7	7	7	7	7	7	7	7	7	7	7	7	7	7	7	7	7	7	
CCGT current	138	138	140	140	140	140	126	119	112	100	92	86	66	57	53	30	21	17	15	7	2						
Coal current	107	107	107	107	107	107	101	92	85	70	48	20	12														
Drax	24	24	24	24	24	24	24	24	16	8																	
Drax (retrofit & 20% biomass)										10	22	31	33	33	33	33	33	31	33	32	33	31	28	28	27	27	
Coal retrofit/new							3	3	9	15	21	33	38	38	38	38	38	35	38	38	36	32	32	32	32	32	
CCGT advanced/refurbished						3	6	6	6	6	6	6	6	6	6	6	6	6	6	6	6	6	6	6	3	0	
Solar CSP imports																	2	3	8	10	10	10	12	12	12	12	
Carbon dioxide emissions (MtCO₂)																											
Total emissions (MtCO ₂)	185.6	186.1	187.4	188.1	188.9	191.0	184.0	174.1	162.7	146.9	127.2	112.2	102.7	90.0	90.3	82.9	79.7	75.8	78.2	75.0	72.7	69.0	66.3	64.8	62.7	62.8	
Total emissions (MtC)	50.6	50.7	51.1	51.3	51.5	52.1	50.2	47.5	44.4	40.1	34.7	30.6	28.0	24.5	24.6	22.6	21.7	20.7	21.3	20.4	19.8	18.8	18.1	17.7	17.1	17.1	
Total emissions as % of 1990 level	79%	79%	79%	80%	80%	81%	78%	74%	69%	62%	54%	48%	44%	38%	38%	35%	34%	32%	33%	32%	31%	29%	28%	27%	27%	27%	
CHP	6.3	6.8	7.3	8.0	8.8	9.8	10.8	11.8	13.0	14.5	16.0	17.8	19.5	21.3	22.8	24.3	24.3	24.3	24.3	24.3	24.3	24.3	22.5	20.5	19.5	20.3	
Micro CHP	0.0	0.0	0.0	0.0	0.0	0.0	0.5	1.0	1.5	2.0	2.5	3.0	3.5	4.0	4.5	5.0	5.5	6.0	6.5	7.0	7.5	8.0	8.5	9.0	9.5	10.0	
CCGT current	56.6	56.6	57.4	57.4	57.4	57.4	51.7	48.8	45.9	41.0	37.7	35.3	27.1	23.4	21.7	12.3	8.6	7.0	6.2	2.9	0.8	0.0	0.0	0.0	0.0	0.0	
Coal current	100.9	100.9	100.9	100.9	100.9	100.9	95.2	86.8	80.2	66.0	45.3	18.9	11.3	0.0	0.0	0.0	0.0	0.0	0.0	0.0	0.0	0.0	0.0	0.0	0.0	0.0	
Drax	21.8	21.8	21.8	21.8	21.8	21.8	21.8	21.8	14.6	7.3	0.0	0.0	0.0	0.0	0.0	0.0	0.0	0.0	0.0	0.0	0.0	0.0	0.0	0.0	0.0	0.0	
Drax (retrofit & 20% biomass)	0.0	0.0	0.0	0.0	0.0	0.0	0.0	0.0	0.0	5.0	11.0	15.5	16.5	16.5	16.5	16.5	16.5	15.5	16.5	16.0	16.5	15.5	14.0	14.0	13.5	13.5	
Coal retrofit/new	0.0	0.0	0.0	0.0	0.0	0.0	1.8	1.8	5.4	8.9	12.5	19.6	22.6	22.6	22.6	22.6	22.6	20.8	22.6	22.6	21.4	19.0	19.0	19.0	19.0	19.0	
CCGT advanced/refurbished	0.0	0.0	0.0	0.0	0.0	1.1	2.2	2.2	2.2	2.2	2.2	2.2	2.2	2.2	2.2	2.2	2.2	2.2	2.2	2.2	2.2	2.2	2.2	2.2	2.2	1.1	0.0
Total gas consumption (BCM methane)	32.0	32.3	33.0	33.4	33.7	34.8	33.2	32.5	31.9	31.0	31.0	31.4	28.4	27.7	27.9	24.1	22.5	21.8	21.7	20.2	19.5	19.2	18.4	17.7	16.8	16.9	
Gas consumption as % of 2005	100%	101%	103%	104%	105%	109%	104%	101%	100%	97%	97%	98%	89%	86%	87%	75%	70%	68%	68%	63%	61%	60%	58%	55%	52%	53%	

"Slow Coal" scenario																											
Electricity Supply (TWh)	2005	2006	2007	2008	2009	2010	2011	2012	2013	2014	2015	2016	2017	2018	2019	2020	2021	2022	2023	2024	2025	2026	2027	2028	2029	2030	
Demand	402	404	406	408	410	411	412	412	411	410	409	408	407	405	403	400	400	400	400	400	400	400	400	400	400	400	400
CHP	25	27	29	32	35	38	41	44	47	51	55	60	65	71	76	80	80	80	80	80	80	80	80	80	80	75	75
Micro CHP							1	2	3	4	5	6	7	8	9	10	11	12	13	14	15	16	17	18	19	20	
Renewables	14	18	21	25	29	33	38	43	48	53	58	63	68	73	77	80	85	90	95	100	105	110	115	120	125	130	
Nuclear	80	86	80	77	68	61	53	53	53	53	53	44	44	44	27	27	27	27	8	8	8	8	8	8	8	8	
Interconnectors	10	0	3	1	9	8	3	3	7	7					6				8	9	8	2					
Oil	4	4	4	4	4	4	3	3	2	2																	
IGCC & Miller CCS schemes							7	7	7	7	7	7	7	7	7	7	7	7	7	7	7	7	7	7	7	7	
CCGT current	138	138	138	138	140	140	130	115	108	95	85	80	60	50	40	25	20	13	12	5							
Coal current	107	107	107	107	100	94	88	82	78	70	62	24	15	6													
Drax	24	24	24	24	25	24	24	24	16	8																	
Drax (retrofit & 20% biomass)										10	22	31	33	33	33	33	33	33	33	33	33	33	31	30	29	29	
Coal retrofit/new						6	18	30	36	44	56	75	90	95	98	98	97	98	98	98	98	98	98	93	93	95	
CCGT advanced/refurbished						3	6	6	6	6	6	18	18	18	30	40	40	40	46	46	46	46	44	44	44	44	
Solar CSP imports																											
Carbon dioxide emissions (MtCO₂)																											
Total emissions (MtCO ₂)	185.6	186.1	186.6	187.3	183.2	183.0	181.6	177.9	168.5	159.4	154.9	138.7	133.5	125.6	123.6	122.4	120.0	117.9	120.0	117.4	115.6	115.8	114.3	111.1	109.6	111.1	
Total emissions (MtC)	50.6	50.7	50.9	51.1	50.0	49.9	49.5	48.5	46.0	43.5	42.2	37.8	36.4	34.3	33.7	33.4	32.7	32.2	32.7	32.0	31.5	31.6	31.2	30.3	29.9	30.3	
Total emissions as % of 1990 level	79%	79%	79%	79%	78%	78%	77%	75%	71%	68%	66%	59%	57%	53%	52%	52%	51%	50%	51%	50%	49%	49%	48%	47%	46%	47%	
CHP	6.3	6.8	7.3	8.0	8.8	9.5	10.3	11.0	11.8	12.8	13.8	15.0	16.3	17.8	19.0	20.0	20.0	20.0	20.0	20.0	20.0	20.0	20.0	20.0	18.8	18.8	
Micro CHP	0.0	0.0	0.0	0.0	0.0	0.0	0.3	0.5	0.8	1.0	1.3	1.5	1.8	2.0	2.3	2.5	2.8	3.0	3.3	3.5	3.8	4.0	4.3	4.5	4.8	5.0	
CCGT current	56.6	56.6	56.6	56.6	57.4	57.4	53.3	47.2	44.3	39.0	34.9	32.8	24.6	20.5	16.4	10.3	8.2	5.3	4.9	2.1	0.0	0.0	0.0	0.0	0.0	0.0	
Coal current	100.9	100.9	100.9	100.9	94.3	88.6	83.0	77.3	73.6	66.0	58.5	22.6	14.1	5.7	0.0	0.0	0.0	0.0	0.0	0.0	0.0	0.0	0.0	0.0	0.0	0.0	
Drax	21.8	21.8	21.8	21.8	22.8	21.8	21.8	21.8	14.6	7.3	0.0	0.0	0.0	0.0	0.0	0.0	0.0	0.0	0.0	0.0	0.0	0.0	0.0	0.0	0.0	0.0	
Drax (retrofit & 20%)	0.0	0.0	0.0	0.0	0.0	0.0	0.0	0.0	0.0	5.0	11.0	15.5	16.5	16.5	16.5	16.5	16.5	16.5	16.5	16.5	16.5	16.5	15.5	15.0	14.5	14.5	
Coal retrofit/new	0.0	0.0	0.0	0.0	0.0	4.5	10.7	17.9	21.4	26.2	33.3	44.6	53.6	56.5	58.3	58.3	57.7	58.3	58.3	58.3	58.3	58.3	58.3	55.3	55.3	56.5	
CCGT advanced/refurbished	0.0	0.0	0.0	0.0	0.0	1.1	2.2	2.2	2.2	2.2	2.2	6.7	6.7	6.7	11.1	14.8	14.8	14.8	17.0	17.0	17.0	17.0	16.3	16.3	16.3	16.3	
Total gas consumption (BCM methane)	32.0	32.3	32.6	32.9	33.7	34.7	33.7	31.0	30.1	28.5	27.7	30.2	26.9	25.7	26.6	26.0	25.1	23.8	24.8	23.5	22.6	22.7	22.3	22.4	21.8	22.0	
Gas consumption as % of 2005	100%	101%	102%	103%	105%	108%	105%	97%	94%	89%	87%	94%	84%	80%	83%	81%	78%	74%	77%	73%	70%	71%	70%	70%	68%	69%	

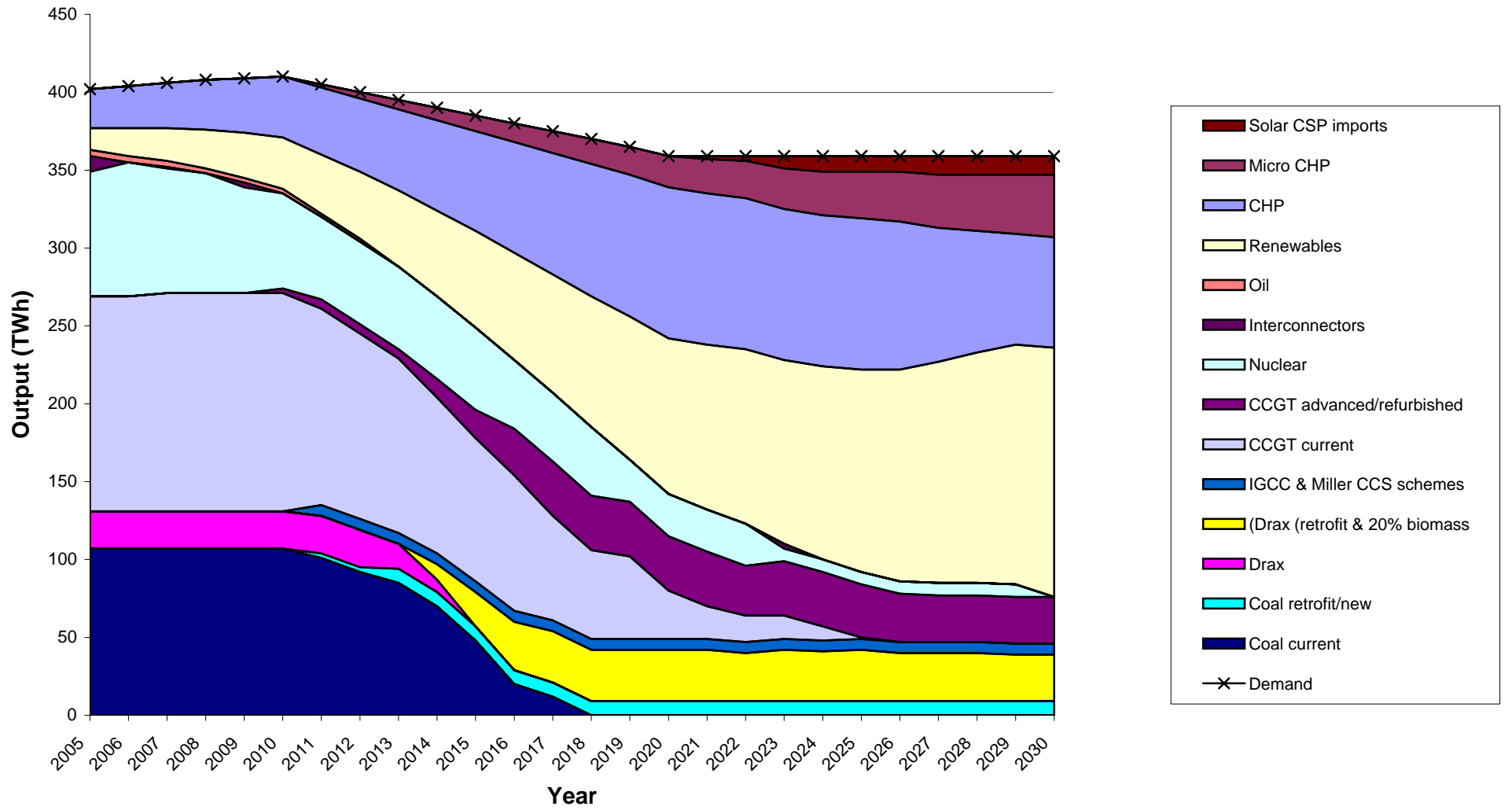
"good gas" scenario



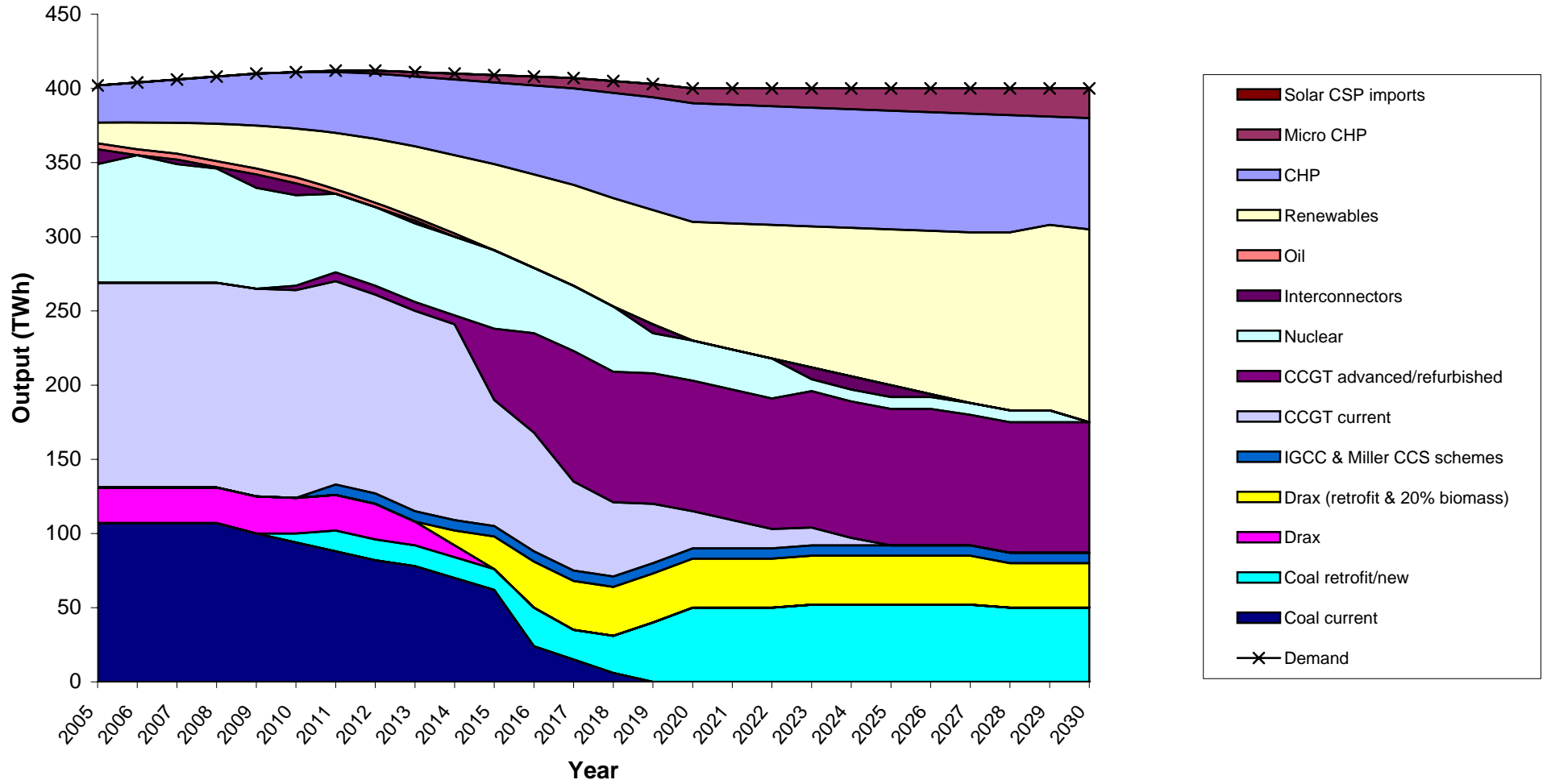
"slow gas" scenario



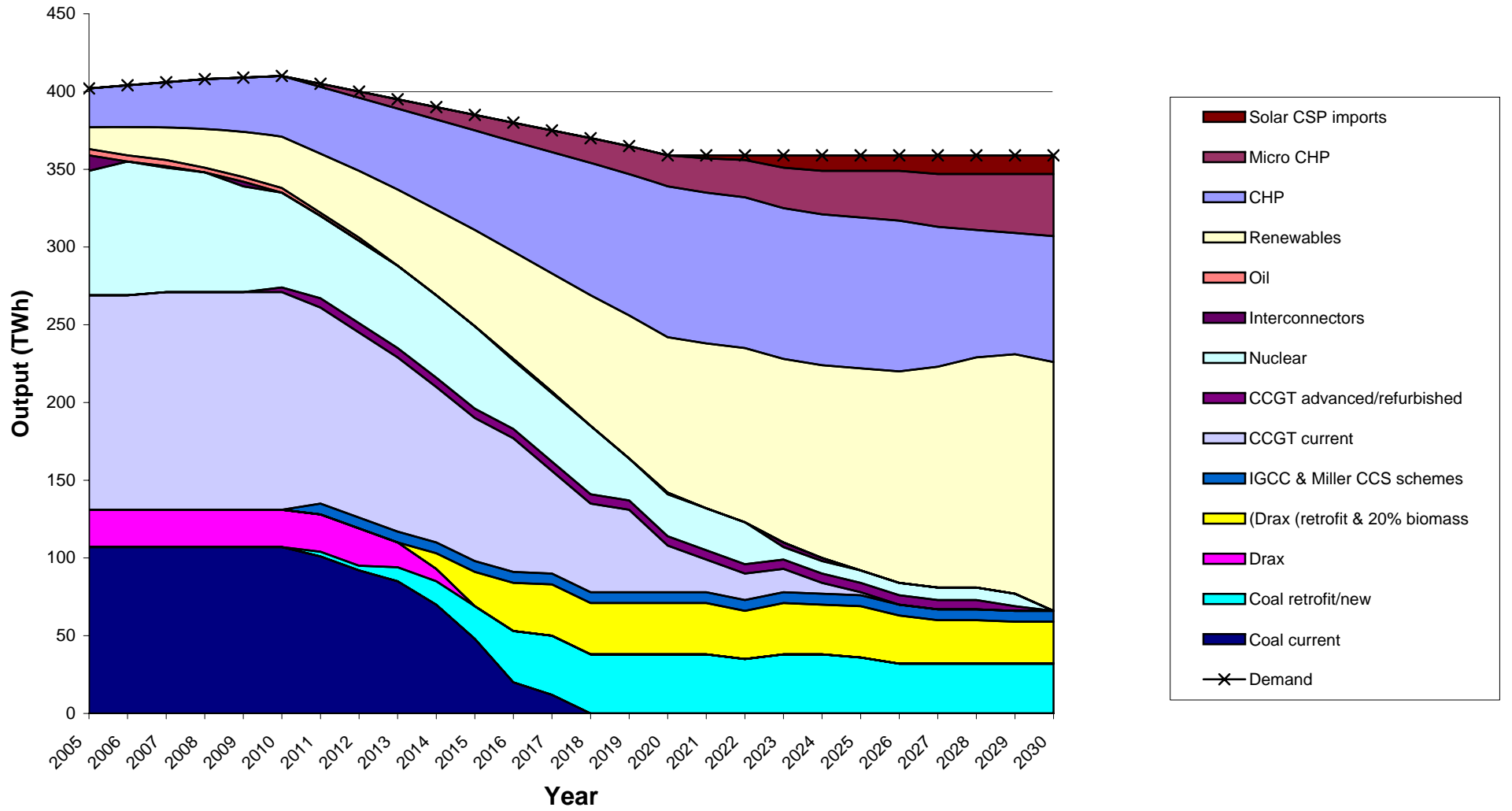
"good mix" scenario



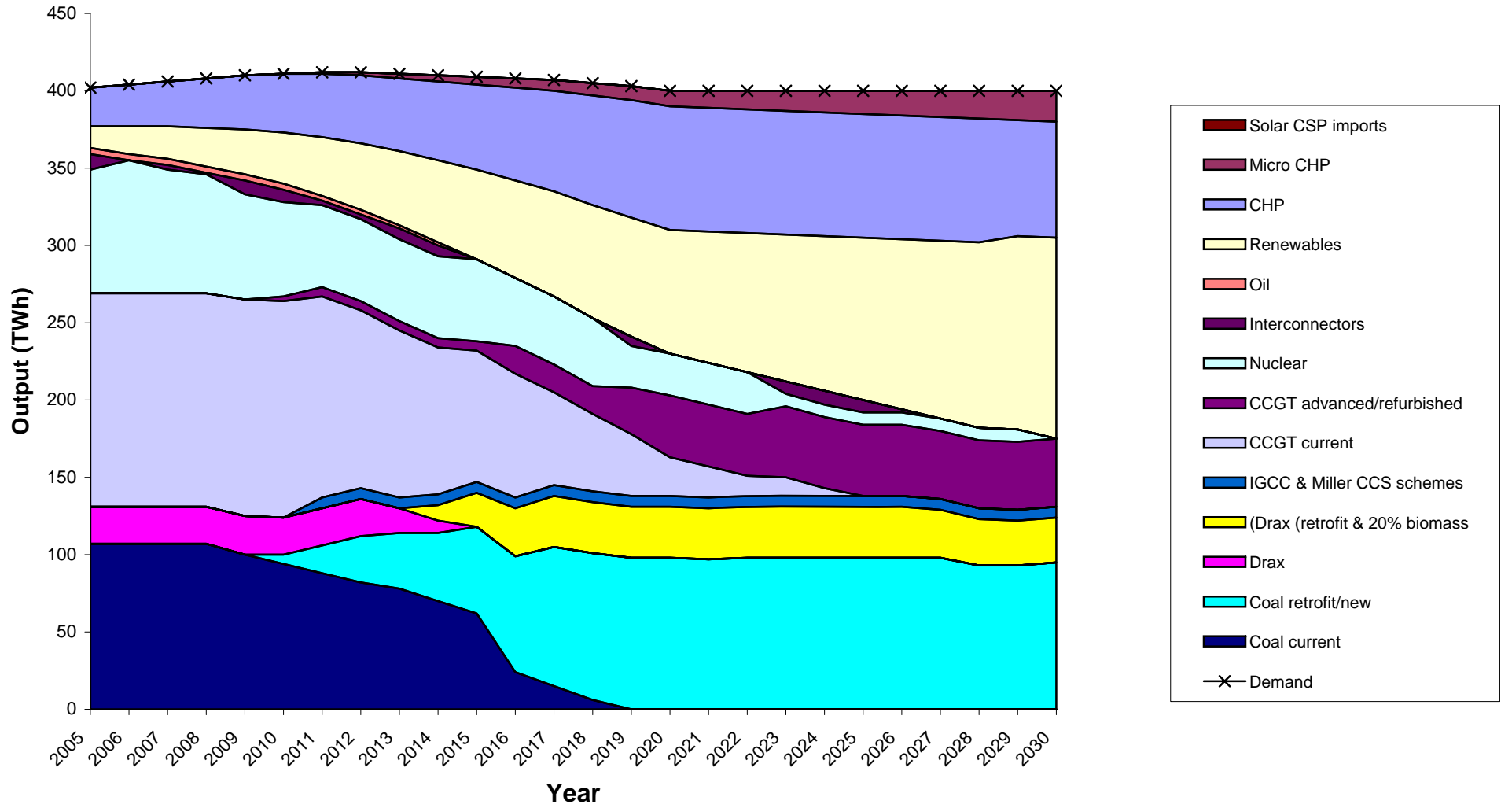
"slow mix" scenario



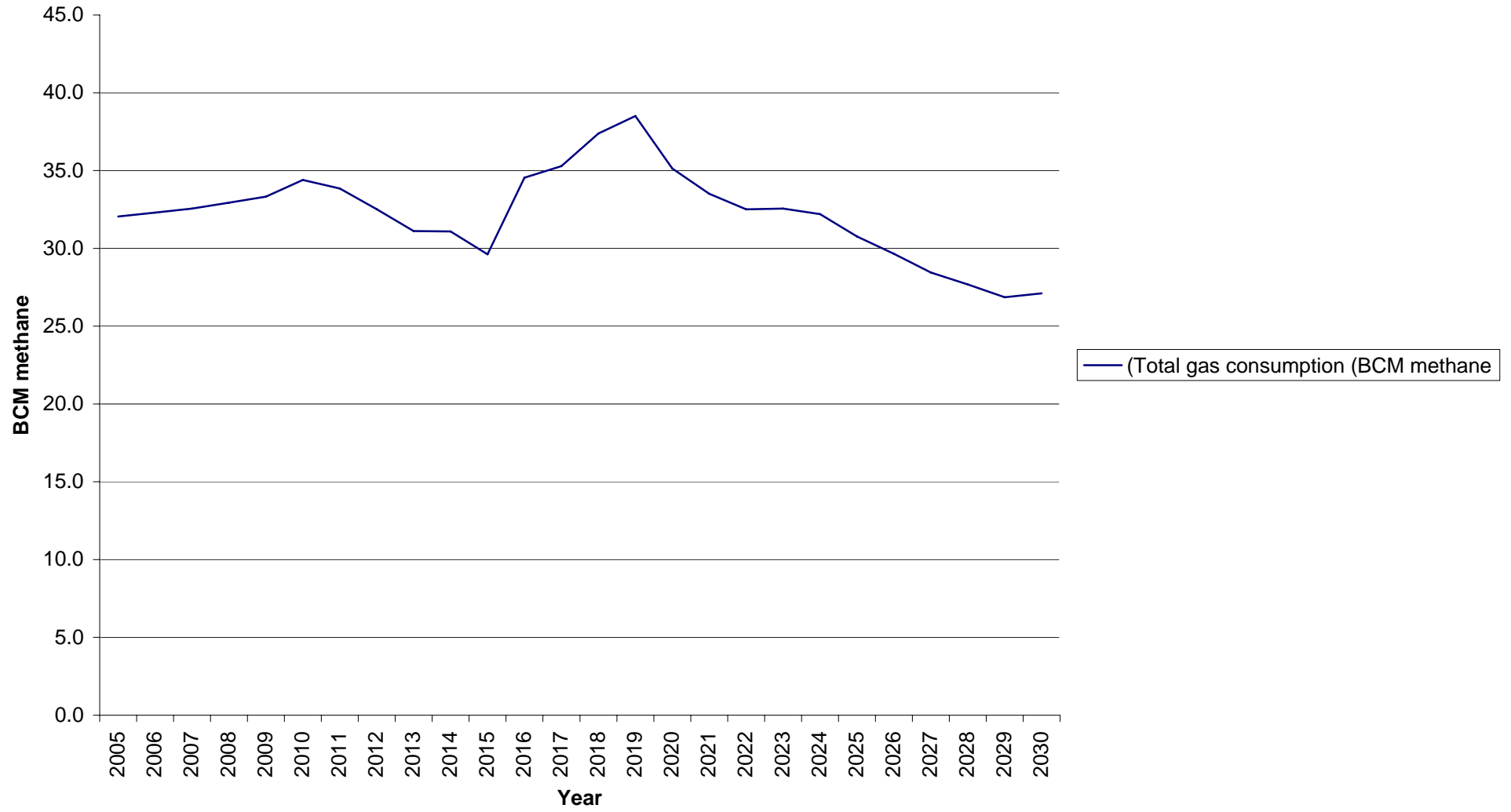
"good coal" scenario



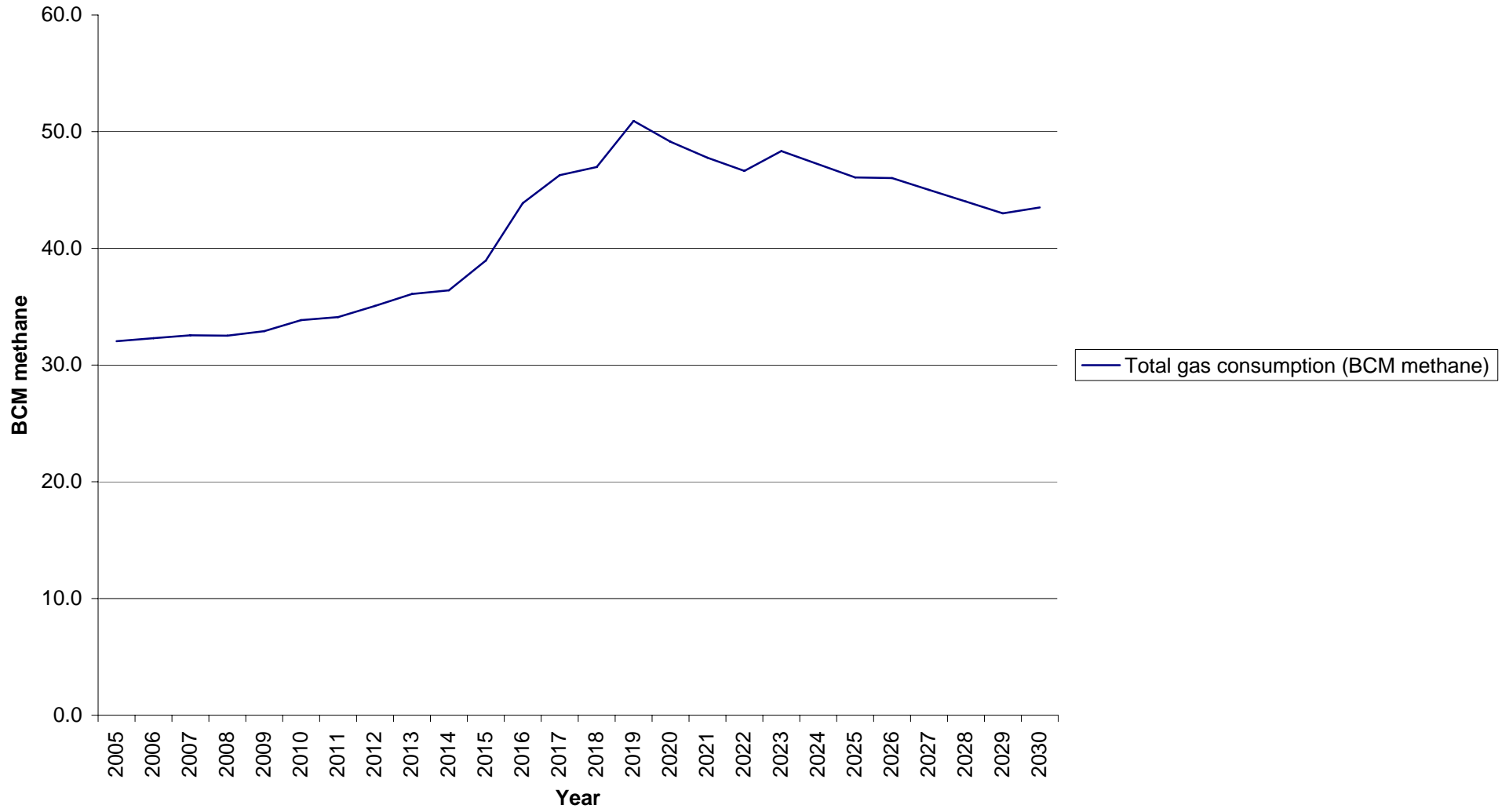
"slow coal" scenario



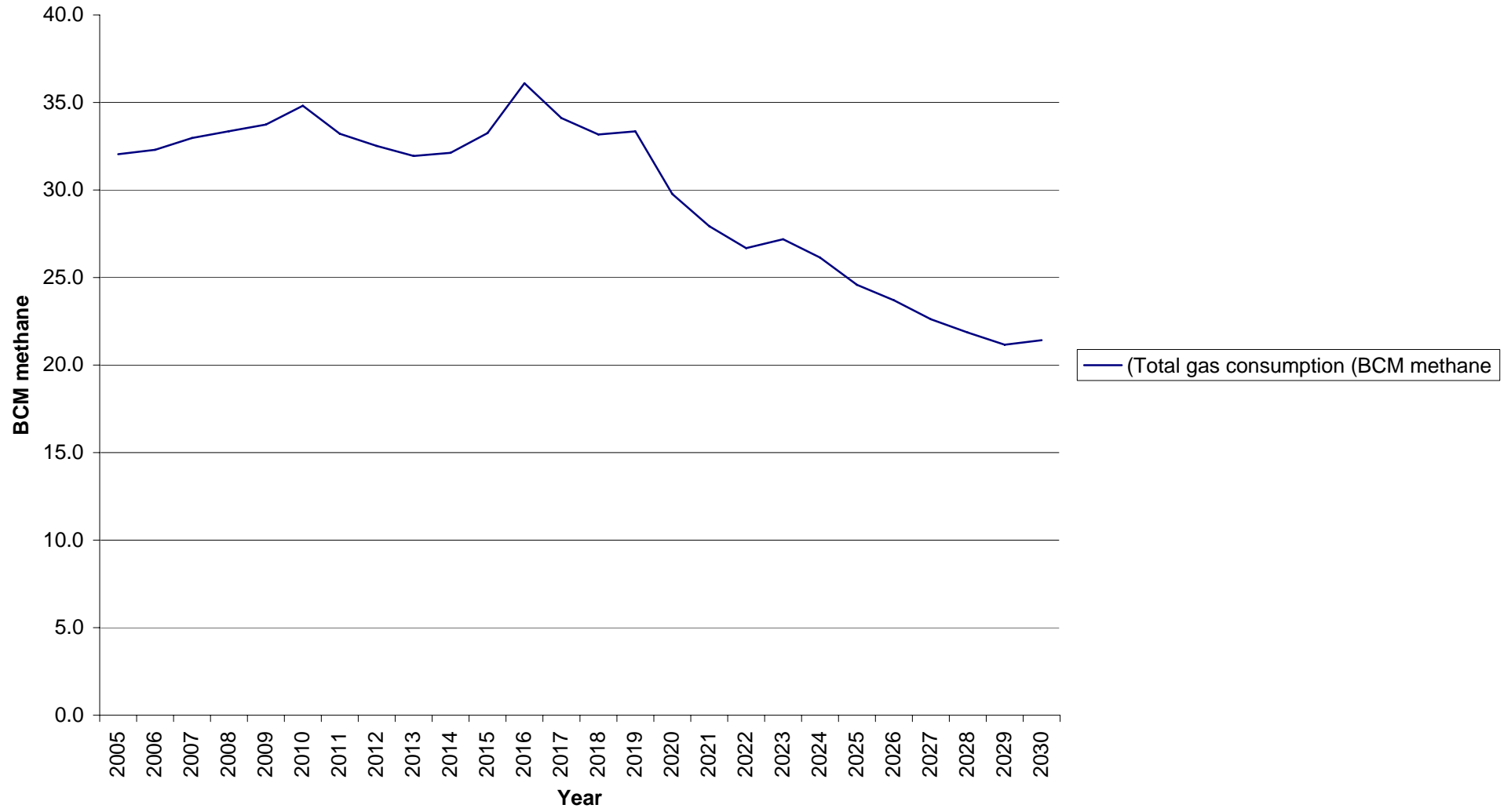
"good gas" scenario: gas consumption (BCM methane)



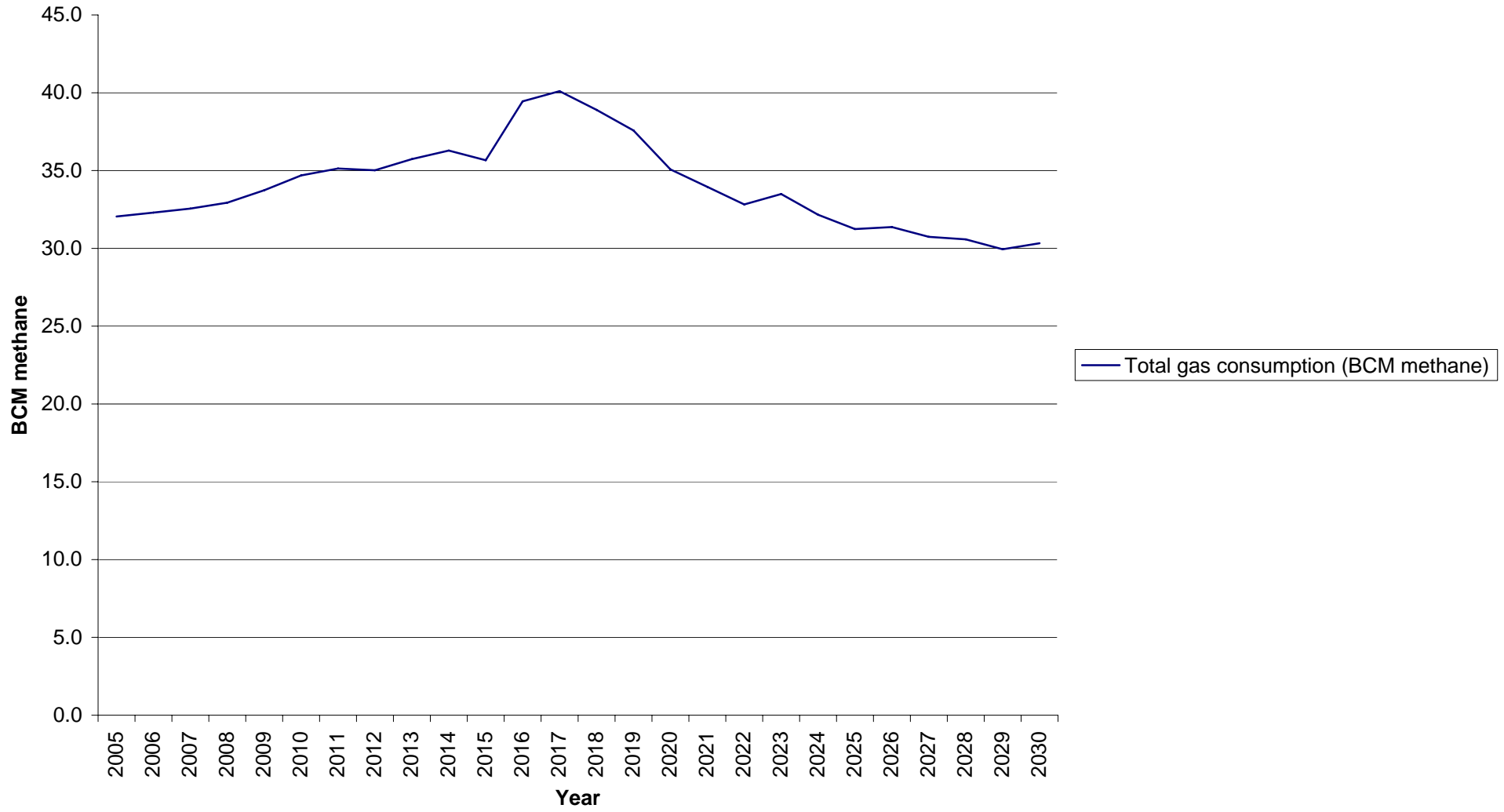
"slow gas" scenario: gas consumption (BCM methane)



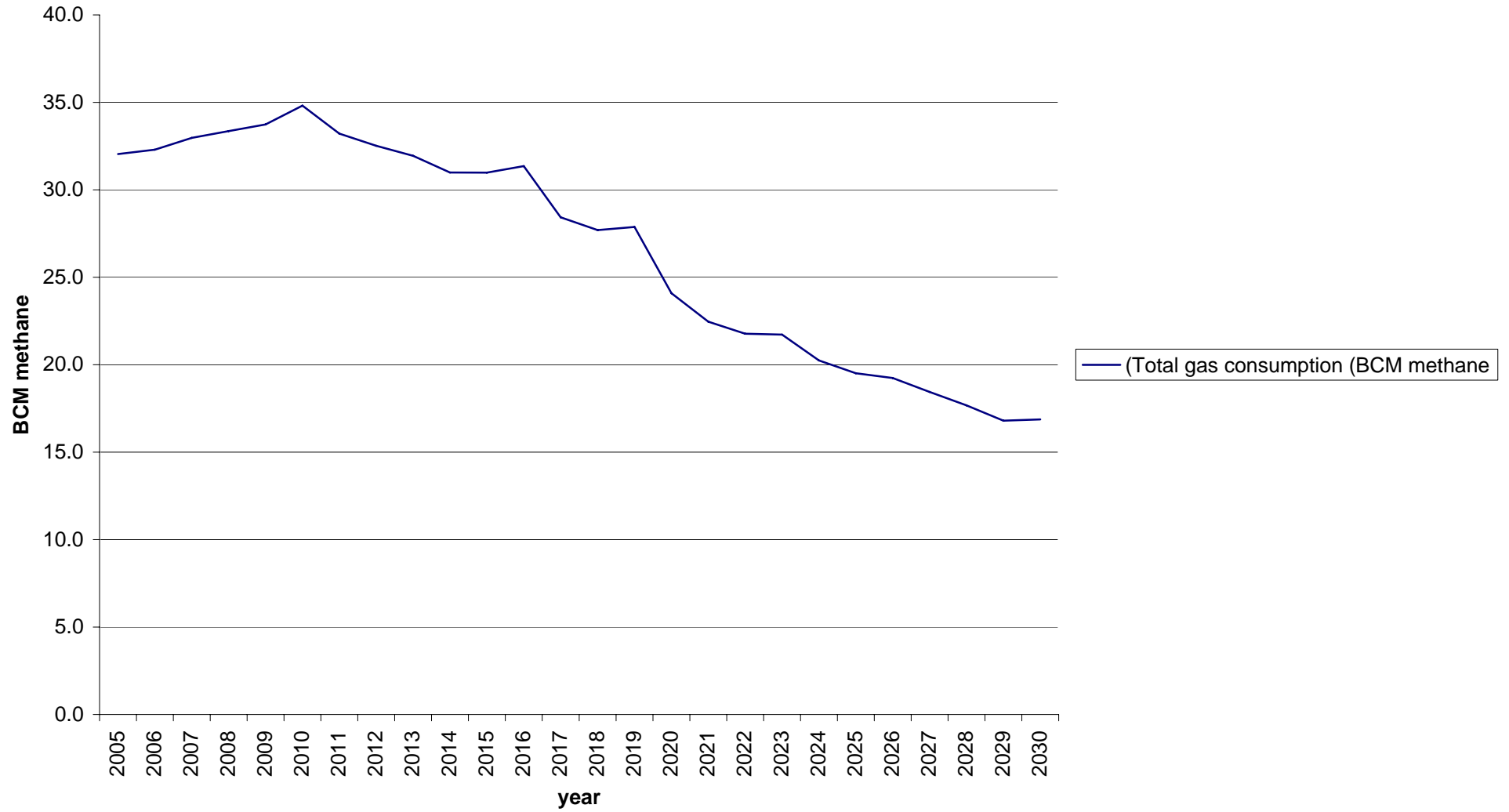
"good mix" scenario: gas consumption (BCM methane)



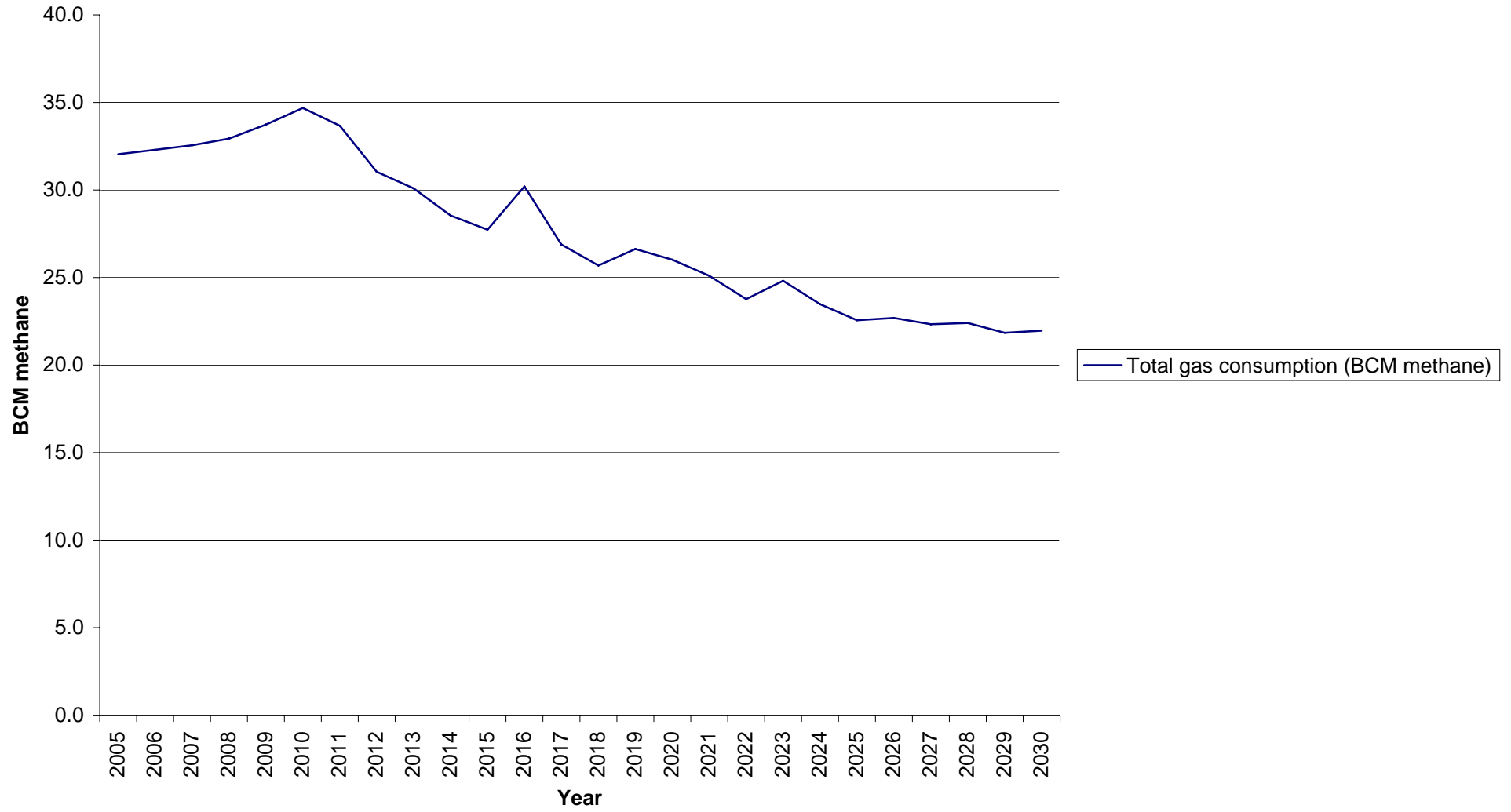
"slow mix" scenario: gas consumption (BCM methane)



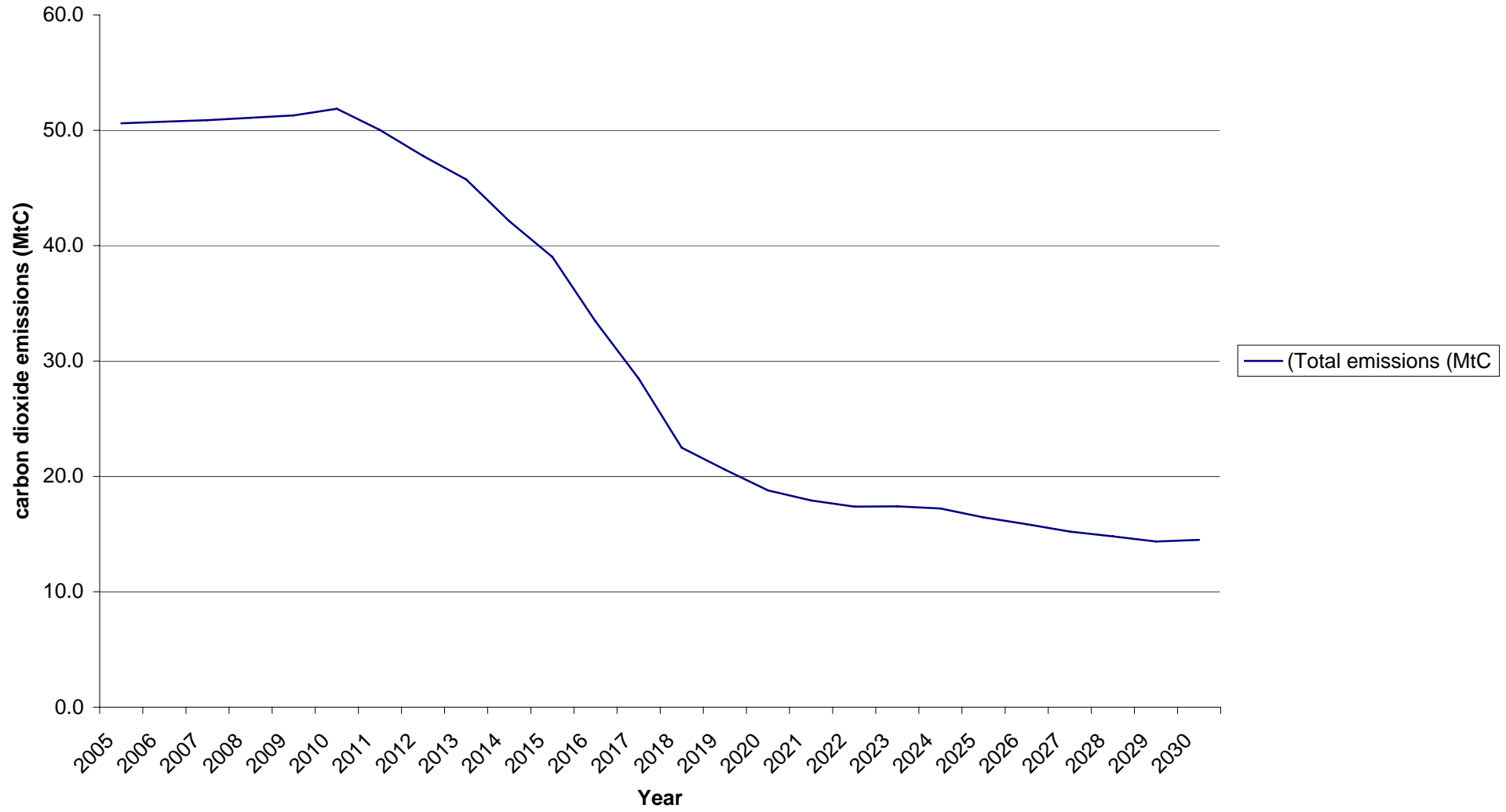
"good coal" scenario: gas consumption (BCM methane)



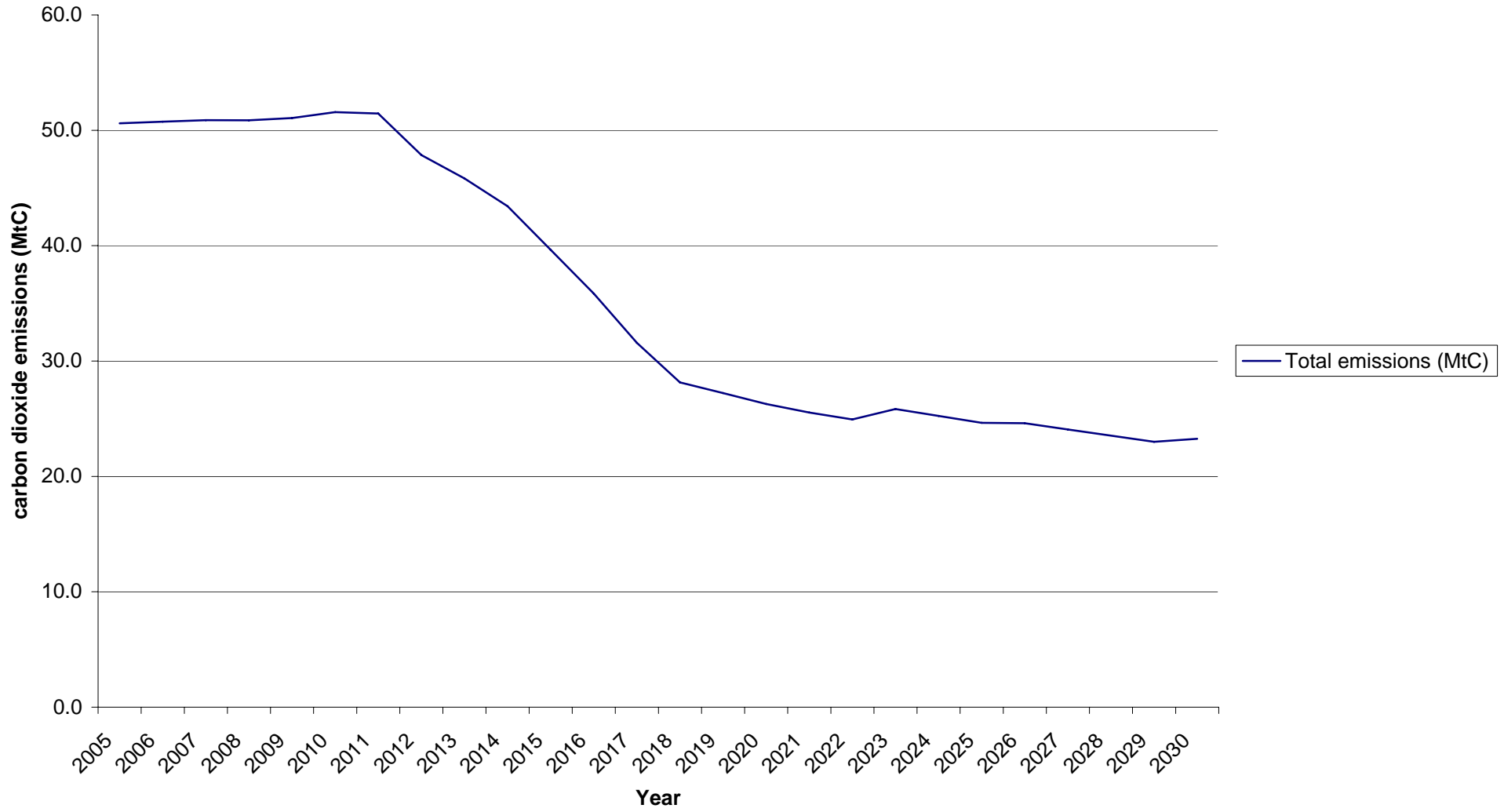
"slow coal" scenario: gas consumption (BCM methane)



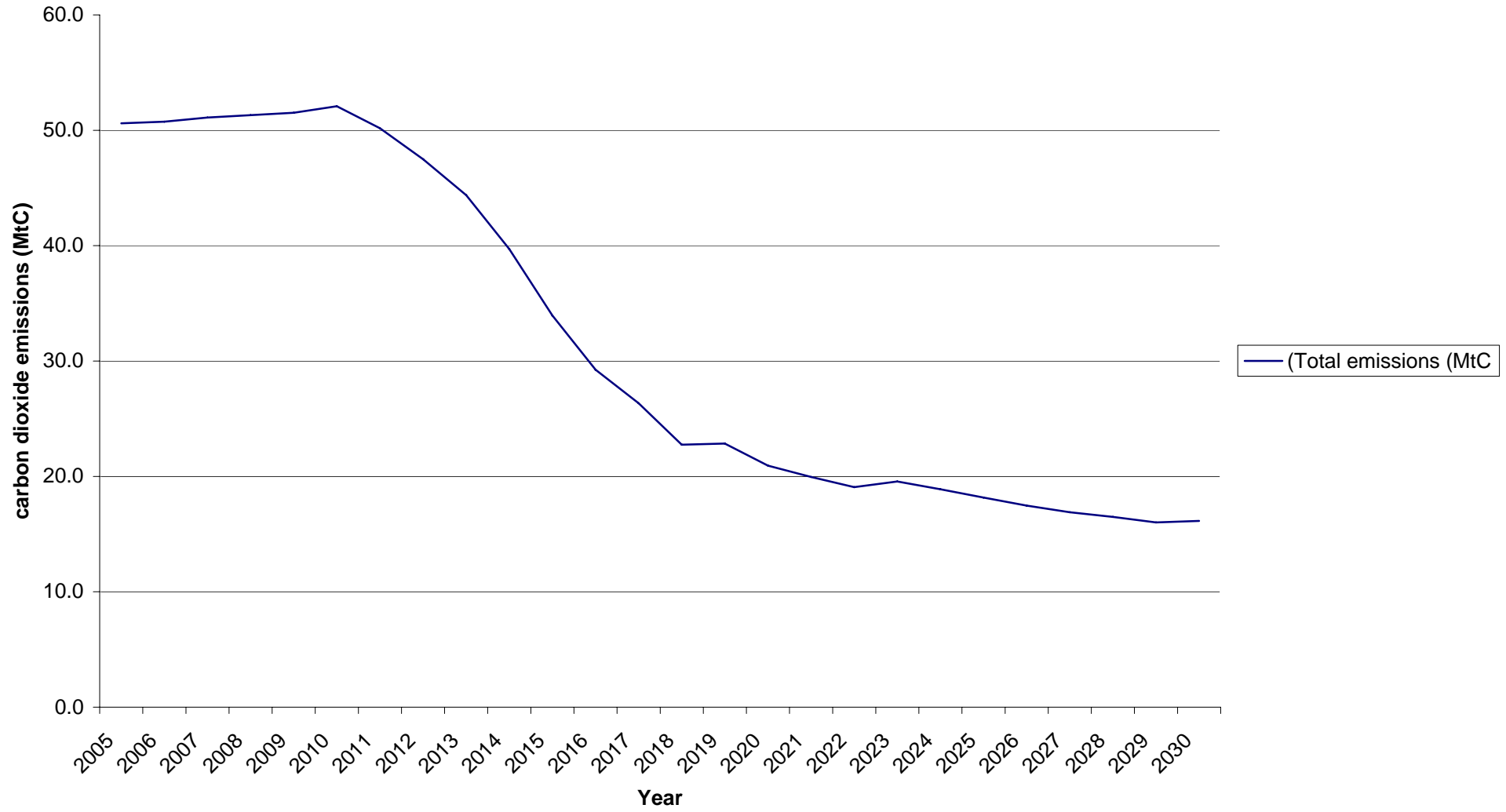
"good gas" scenario: total carbon dioxide emissions (MtC)



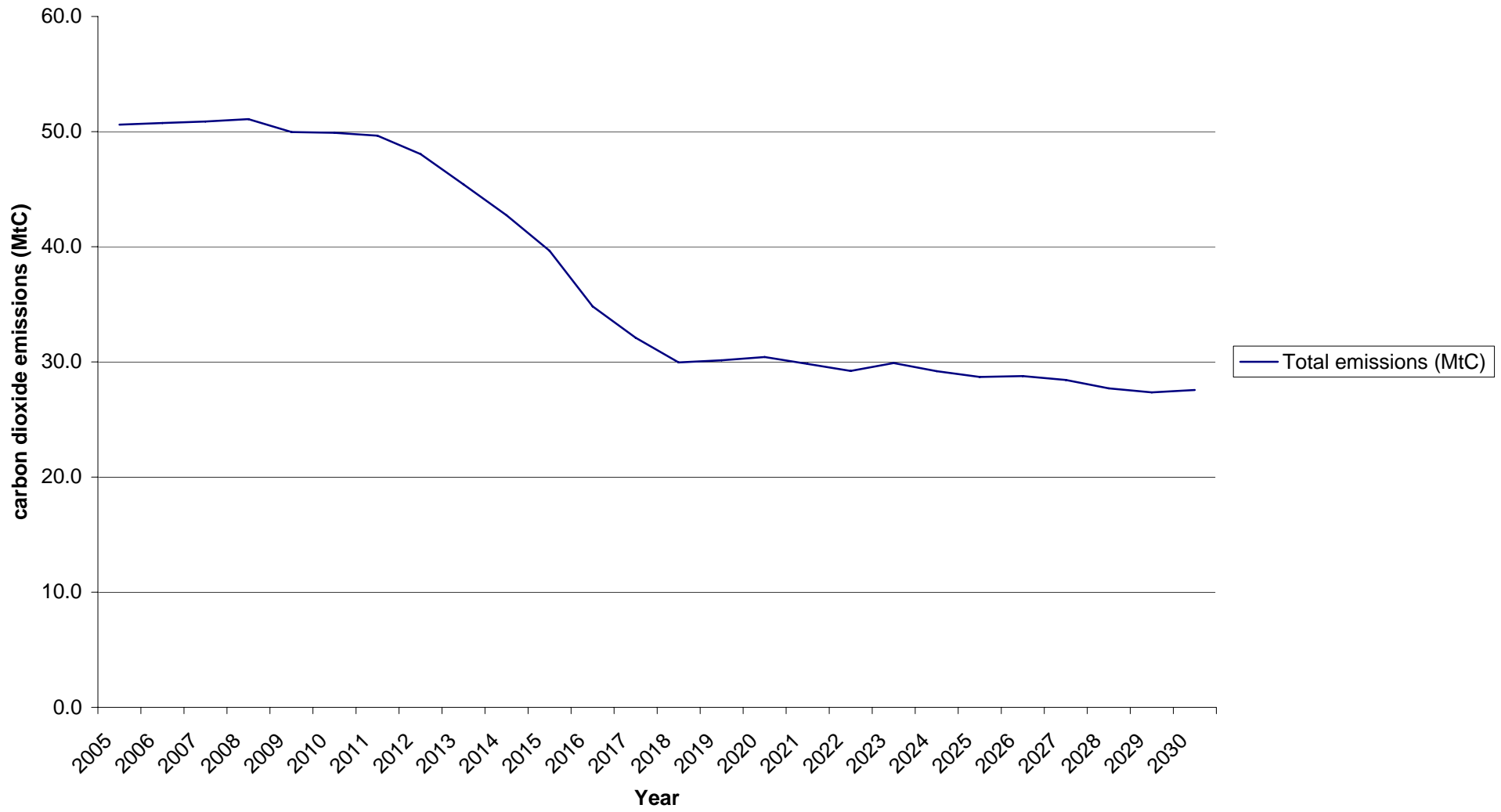
"slow gas" scenario: total carbon dioxide emissions (MtC)



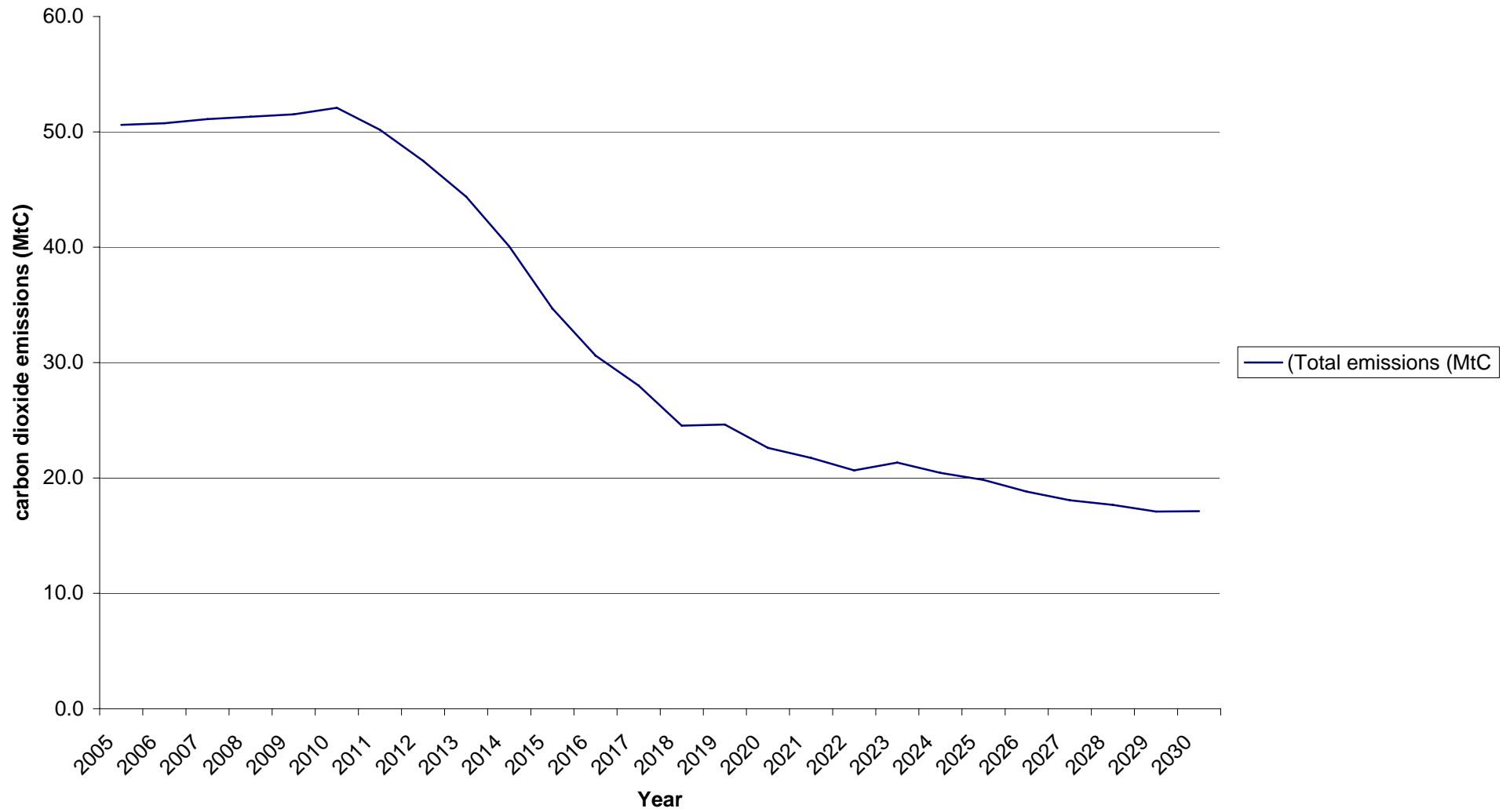
"good mix" scenario: total carbon dioxide emissions (MtC)



"slow mix" scenario: total carbon dioxide emissions (MtC)



"good coal" scenario: total carbon dioxide emissions (MtC)



"slow coal" scenario: total carbon dioxide emissions (MtC)

